

Phippsburg

Water Resources and Shoreland Habitats



This map is nonregulatory and is intended for planning purposes only

— Organized
Towns

Maine Stream Habitat Viewer Road Stream Crossings

⊗ Barrier

⊖ Potential
Barrier

*Crossings on
private roads
not shown.

[Find crossing details on the
Stream Viewer -](#)

beginningwithhabitat.org/maps

• Shellfish
Growing Areas

Distributions of molluscan shellfish species.

Wetlands

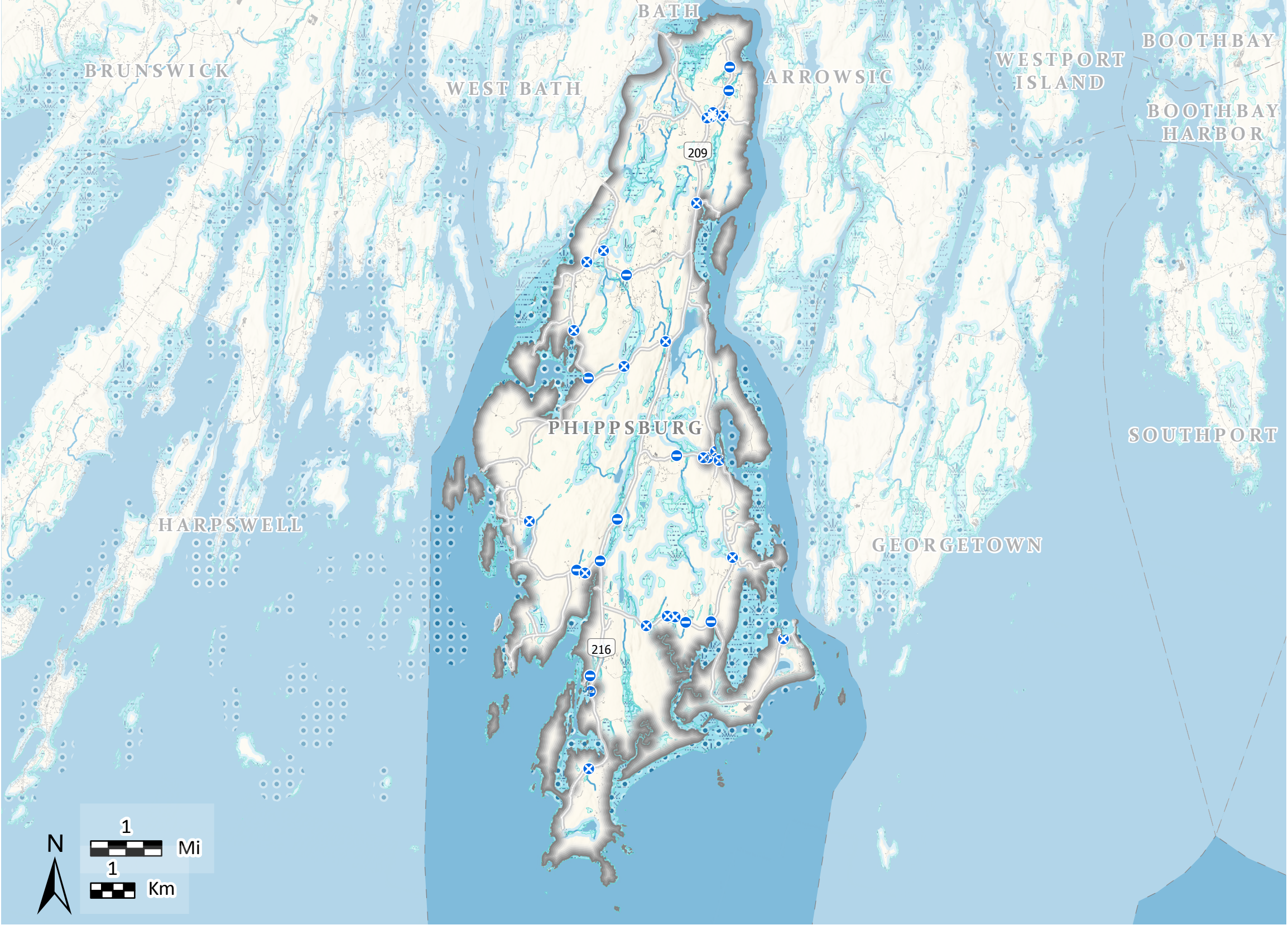
National Wetlands Inventory (NWI) uses
aerial photographs to approximate wetland
locations. NWI data typically under represents
the presence of wetlands on the landscape.

Shoreland
Areas

Areas are delineated by ME Dep. of
Environmental Protection's Mandatory
Shoreland Zoning Act, which includes areas
within 250 feet of great ponds, rivers, and
wetlands, and within 75 feet of streams. The
regulations within each shoreland zone
depends on the town, and towns may regulate
greater areas than what is shown here. For
more information, please visit: [https://
www.maine.gov/dep/land/slz/](https://www.maine.gov/dep/land/slz/)

Developed

Impervious surfaces including buildings and
roads.



Beginning with Habitat (BwH) equips Maine communities, landowners, and conservation partners with tools to protect, restore, and connect important habitats and ecosystems in a changing climate. www.beginningwithhabitat.org

April 2025

TOWNSHIP BOUNDARIES - Maine Office of GIS (2020)
ROADS - ME Office of GIS, ME Dept of Transportation (2021)
HYDROLOGY -USGS National Hydrography Dataset (2016)
DEVELOPED - CCAP NOAA impervious land cover (2022)
NATIONAL WETLANDS INVENTORY - U.S. Fish & Wildlife Service (2020)
SHORELAND AREAS - ME Office of GIS, ME Natural Areas Pgm(2011)

BROOK TROUT PRIORITY CONSERVATION AREAS - ME Dept of Inland Fisheries & Wildlife (2020)
MAINE HERITAGE FISH WATERS - ME Dept of Inland Fisheries & Wildlife (2022)
ATLANTIC SALMON HABITAT - ME Dept of Marine Resources (2024)
SHELLFISH - ME Dept of Marine Resources (2010)
ME ROAD STREAM HABITAT CROSSINGS - ME Dept of Inland Fisheries & Wildlife, US Fish and Wildlife Service (2022)